

# Subject Eight

## The Physics of Astrology

©2023, Aleph Talks



# Outline

- About the Authors
- What Is the Problem?
- C.G. Jung and Archetypes
- Physics of Astrology
- Dark Matter and Archetypes

# About the Authors

**Dr. Barton Stuck** received his SB, SM and PhD from the Massachusetts Institute of Technology and worked from 1972 to 1984 as a pioneering technology developer at Bell Labs, while lecturing at more than 50 universities and research institutes in North America, Western Europe, the Soviet Union and Japan. He has published more than 30 refereed papers, co-authored a book, *A Computer and Communication Network Performance Analysis Primer*, and holds four patents. Foreseeing the collapse of AT&T, Dr. Stuck worked with major telecom carriers around the globe as well as more than 30 venture capital funds, before co-founding his own venture capital fund in 1998. Dr. Stuck has practiced yoga and meditation and studied the Yoga Sutras of Patanjali for more than 20 years. He began teaching Aleph Talks with Jungian Astrologer Marjorie Partch in 2020.

His publications are available on [Google Scholar](#).

# About the Authors

**Rev. Marjorie Partch** is a counseling, teaching, and writing Jungian astrologer and Tarot interpreter with more than 35 years' experience. In addition to her training in transformational astrology, she has studied Integrative Therapy with an emphasis on the work of C.G. Jung, and is a longtime student of yoga, meditation, and Kabbalah, as well as a practicing artist and poet. Also a New York City publishing veteran, Marjorie was a contributor to *Your Birthday Sign Through Time*, Simon & Schuster, 2002. For more than 20 years, she has also offered Reiki sessions with or without spiritual counseling. Abruptly transplanted from her hometown in early 2001 (by way of Vermont), she is now happily available in Fairfield County, Conn. Ordained in 2006, she received her labyrinth facilitator training from Rev. Lauren Atress the same year, and she and Dr. Stuck share their Blue Lotus canvas labyrinth as a tool for spiritual transformation and Sacred Activism.

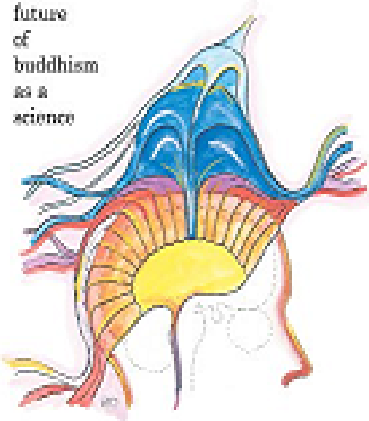
# Special Acknowledgment

Bart and Marjorie would like to acknowledge the unique work of the Toronto-based Buddhist monk and physicist **Ron Cowan**. His contributions to their understanding of Reality were possible due to Ron's extensive 1990 to 2019 clairvoyant thought / meditation / visualization experiments (in the tradition of Annie Besant *et al.*), some of which Bart witnessed and assisted in from 2016 to 2019, when Ron left this Earth.

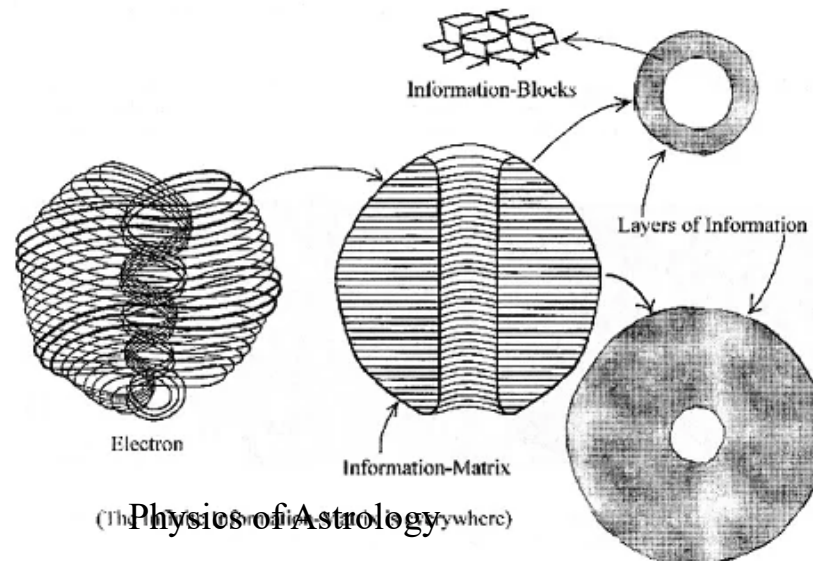
Ron's beautiful illustrations of his observations, such as the Crown Chakra to the left and the electron below, are available in his books on Amazon, and [AlephTalks.com](http://AlephTalks.com).

THE  
PATH  
OF  
LOVE

the  
future  
of  
buddhism  
as a  
science



RONALD D. COWAN



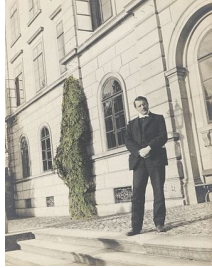
(The Physics of Astrology) (where)

# What Is the Problem?



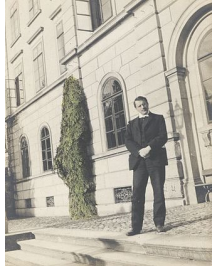
- Historically astrology drew on the observations from astronomy to relate motions of heavenly bodies to human affairs.
- Classical astrology was considered an essential element in formal education, and was cited by Dante Aligheri, Geoffrey Chaucer, William Shakespeare, and many others.
- In Western Europe starting with the “Enlightenment,” astrology lost its status as worthy of scholarly academic pursuit, but since the 1960s it has been ascendant again, assisted by the advent of the computer. In India it is still an active part of daily life.
- This presentation is an attempt to show astrology in a more credible light as an academic pursuit by drawing on new concepts in physics and psychiatry. We present a set of hypotheses of a work in progress that need to be tested and iterated to place astrology on a proper scholarly foundation.

# C.G.Jung on Archetypes



- **Jungian archetypes**, according to Wikipedia, are a concept from psychology that refers to a universal, inherited idea, pattern of thought, or image that is present in the [collective unconscious](#) of all human beings.
- The psychic counterpart of [instinct](#), archetypes are thought to be the basis of many of the common themes and symbols that appear in stories, myths, and dreams across different cultures and societies.
- Some examples of archetypes include those of the [mother](#), the child, the [trickster](#), and [the flood](#), among others. The concept of the collective unconscious was first proposed by [Carl Jung](#), a Swiss psychiatrist and psychoanalyst.

# C.G. Jung on Archetypes



- According to Jung, archetypes are universal, innate patterns of thought and behavior that strive for realization within an individual's environment.
- This process of actualization influences the degree of [individuation](#), or the development of the individual's unique [identity](#).
- For instance, the presence of a maternal figure who closely matches the child's idealized concept of a mother [as revealed in the birth chart] can evoke innate expectations and activate the mother archetype in the child's mind.
- This archetype is incorporated into the child's personal unconscious as a "mother complex," which is a functional unit of the personal unconscious that is analogous to an archetype in the collective unconscious.



# Physics of Astrology



- While matter is 5% of the universe, dark matter is 27%: Dark matter is everywhere, not just in deep space.
- Dark matter is not dark, it simply cannot be seen in the three spatial dimensions of matter because it is in an adjacent three-dimensional subspace. Its presence can be inferred from how it behaves.



# Physics of Astrology

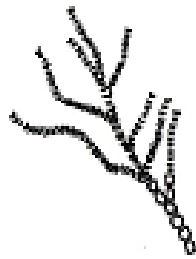


- Dark matter is made up of dark matter subquarks; these occupy a fraction of the space of the matter proton or matter neutron found in matter nuclei.
- Dark matter has two states: inactive and active:
  - Inactive dark matter is inert, exhibits no sentience or sign of life, but will do so when it becomes active;
  - Active dark matter vibrates, because it is in contact with something else that is vibrating such as a star, a planet with temperature above absolute zero, a plant or animal, an atmosphere of a planet, etc.;

# Physics of Astrology



- In active dark matter, consciousness is emergent: when the collective dark matter reaches a critical mass of subquarks, it achieves sentience and consciousness. It continually evolves this consciousness, and suspends its evolution if it becomes inactive.
- Dark matter chemistry is subnuclear chemistry: According to Ron Cowen's observations, the subquarks of dark matter form fern-like structures when active (see Ron Cowen drawings):



# Physics of Astrology



- In interstellar space, dark matter is quiescent, forming tubes hundreds of kilometers long.
- As dark matter lands on stars, planets, moons, asteroids, and their vibrational energy stimulates sentience, even consciousness, perhaps some of the archetypes become embodied:
- In Western culture, the Pantheon of Roman Gods are associated with planets: (Sol & Luna as Sun & Moon), Mercury, Venus, Mars, Jupiter, Saturn, Uranus, Neptune, Pluto; whereas the constellations tend to have figures and stories more from the Greek myths (Aries = Ares; Gemini = Castor & Pollux; etc.)
- In Eastern cultures, we see different figures but the content is similar to Western archetypes.

# Physics of Astrology



- Clearly many more archetypes exist (e.g., Titan, Iapetus, moons of Saturn, Io, moon of Jupiter, Ceres in asteroid belt).
- Hypothesis: Two-tier hierarchy just may dictate “sphere of influence” (inverse square law governing strength of interaction).
- Local solar systems: planets, moons, asteroids.
- Distant stars: “fixed stars” of the constellations, vs. moving planets (“Wanderers” in Greek).
- Dark matter may have landed on Earth during a billion-year epoch when there were only single celled prokaryotes, and by interacting with them, over time became able to create multi-cellular eukaryotes that in turn evolved into plants and animals.

# Physics of Astrology



- At birth (to the nearest minute) each person enters into a ballet with the archetypes in the heavens (local solar system [moving bodies] and [“fixed”] star systems in distant constellations).
- Over time, the distinct characters of each archetype influence the development of each individual, as shown to some extent in the unfoldment of the birth chart over time (through transits and progressions, etc. showing the interactions among the planets and archetypes).

# Physics of Astrology



- Gravitation has a spherical field, whereas the archetypes generate a focused field with lobes at angles such as thirty, forty-five, sixty degrees.
- The conjecture is that the fields of the archetypes interact most strongly in the lobes, perhaps explaining the “orbs of influence of” astrological angles, or “aspects,” such as Trines, Squares, Yods, etc. measured in terms of degrees of arc of a 360-degree circle more-or-less along the path of the Sun, the Ecliptic.

# Physics of Astrology



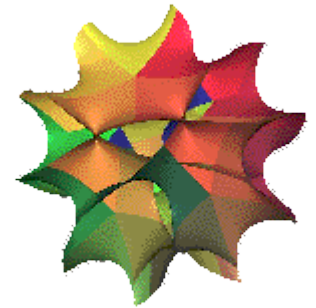
- The conjecture is that first-order interactions are between an archetype and an individual;
- The conjecture is further that the second order and higher order interactions are between two archetypes and a person, or three archetypes and a person, as seen in “heavily aspected” charts – or periods of a person’s life.
- According to Jung, it is of the utmost importance for the individual’s long-term mental health and even survival not to be completely subsumed by an archetype, *e.g.*, the Teacher or the Mother or the Warrior.
- Additionally, both the archetype itself and the individual are evolving over time, through one another and their dance.



# Physics of Astrology



- The archetypes have evolved over trillions of years and it is conjectured that they continue to evolve in compactified Calabi-Yau manifolds' higher realms:
- The configurations of the planetary / diety archetypes at birth (from the point of view of Earth) trigger the birth (adrenalin release, etc.).
- The birth moment (first breath) is in part chosen (by the fetus) to trigger the linkages and evolution of the archetypes of the person.
- This is the dao or path or way for each person in this incarnation.



# 26 Real Dimensional Symplectic Universe



26 REAL DIMENSIONAL SYMPLECTIC <sup>1</sup> UNIVERSE	
10 Matter Dimensions	10 Dark Matter Dimensions
Space-Time 4 Dimensions (x,y,z,ict <sup>2</sup> )	Space-Time 4 Dimensions $i * (x,y,z,ict) = (ix,iy,iz,-ct)$
Symplectic Calabi-Yau Manifold 6 Compactified Dimensions 3 Holes – Genus 3 Hodge Diamond (9,11,6,7)	Symplectic Calabi-Yau Manifold 6 Compactified Dimensions 4 Holes – Genus 4 Hodge Diamond (17,12,21,12)
Symplectic Calabi-Yau Manifold 6 Synchronizing Compactified Dimensions 8 Holes – Genus 8 Hodge Diamond (8,23,21,17)	

© 2022 AlephTalks

<sup>1</sup> Symplectic = real and imaginary pairs.

<sup>2</sup> ict =  $\sqrt{-1}$  \* speed of light \* time.

# Information Controls the 26 Real Dimensional Symplectic Universe



INFORMATION CONTROL HIERARCHY	
<b>Matter</b>	<b>Dark Matter</b>
<b>Biology</b> DNA / RNA, Bioelectricity Mortal	<b>Biology</b> Sentient or Quiescent Life Force Energy – Immortal
<b>Chemistry</b> Electronic Periodic Table of Elements	<b>Chemistry</b> Nuclear Geometry Branching Trees
<b>Physics</b> 10-String Subquarks & Bosons, Electrons	<b>Physics</b> 5-String Subquarks & Bosons (No Electrons)
<b>INFORMATION</b> Calabi-Yau Manifolds	

© 2022 AlephTalks